

# ON-LINE DEHYDRATION, DEGASSING AND ULTRAFILTRATION OF TRANSFORMERS FOR VERY HEAVY WORKING CONDITIONS



## VACUUM SEPARATOR VS-06 A

version 2015 CLIMABOX

**ON POWER RECOVERY OF DIELECTRIC STRENGTH**

**LIFE EXTENSION OF TRANSFORMER**

**REMOTE PROCESS CONTROL AND MONITORING**

**SMS Monitoring**

**DIELECTRIC REMOTE SCREENING**

**MINIMUM SUPERVISION AND/OR MAINTENANCE**

Copyright: Fa. Ing. Altmann, 2015

**Fa. Ing. Altmann ARS Altmann Group**, Machova 142, 344 01 Domazlice, Czech Republic, European Union  
Tel:+420-379 738 778, Fax:+420-379 738 775, Cell phone:+420-602 362 157 email:altmann@iol.cz, [www.ars-altmann.com](http://www.ars-altmann.com);

## Drying of transformers

The presence of moisture in the transformer, to whatever degree, actually harms the insulation which will be permanently damaged. Drying methods can substantially reduce that deterioration.

The Vacuum Separator VS-06 is intended for mobile and preventative use on transformers with more than 2 - 2.5% water content in the cellulose, with particle contamination and excess gases. The **quick restoration of safe dielectric conditions, life-extending features and remote control** also forms part of this concept. The system can be installed regardless of the size of the transformer.

### Main features of VS-06

- ❑ **Moisture, gas and particles content can be reduced to the level of a new transformer**
- ❑ **Quick restoration of dielectric strength of oil**
- ❑ **No impact on the insulating oil properties, no over-drying of the transformer**
- ❑ **No disconnection of the transformer under treatment, not even during the installation of the separator**
- ❑ **Installation and servicing with the minimum manpower**
- ❑ **Direct check of the dehydration efficiency by the volumetric measurement of separated water**
- ❑ **Remote monitoring & control of the drying & degassing processes and the permanent screening of the dielectric behaviour of a transformer**
- ❑ **Application of advanced and patented technologies like “hydraulic piston” for vacuum building and “bubble bed” for moisture separation**

### HOW MUCH MOISTURE IS “TOO MUCH MOISTURE” ?

Moisture enters the transformer either through external contamination, or is generated internally by the oxidation (ageing) of insulants. In either case, practically all the water present in the transformer (over 98%) is contained in solid insulants because the cellulose is very hygroscopic.

Figure 1 shows the equilibrium relationship between the water content in the oil  $C_w$  (ppm) and cellulose  $C_p$  (weight %) at different operational temperatures.

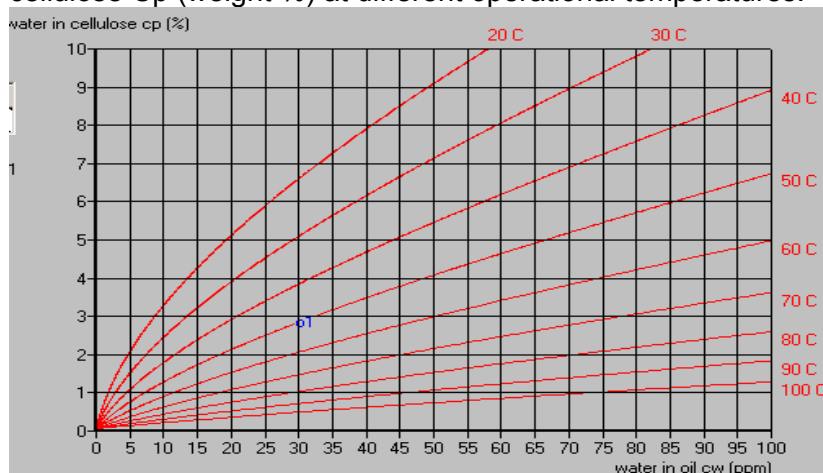


Fig.1 Moisture equilibrium chart (Nielsen diagram – TRACONAL 2005 )

Example: **10MVA Transformer, 700 kg cellulose, 6000 kg oil**

Sampling temperature 50C,  $C_w = 30$  ppm of water in the oil  $\rightarrow C_p = 2.9\%$  weight percent of water in the cellulose.

Total amount of water in the cellulose:  $700 \times 0.029 = 20.3$  kg

Total amount of water in the oil :  $6000 \times 0.00030 = 0.18$  kg

If one wishes to reduce the moisture to an acceptable 2% boundary then:  $700 \times (0.029 - 0.02) = 6.3$  kg water must be removed from the transformer.

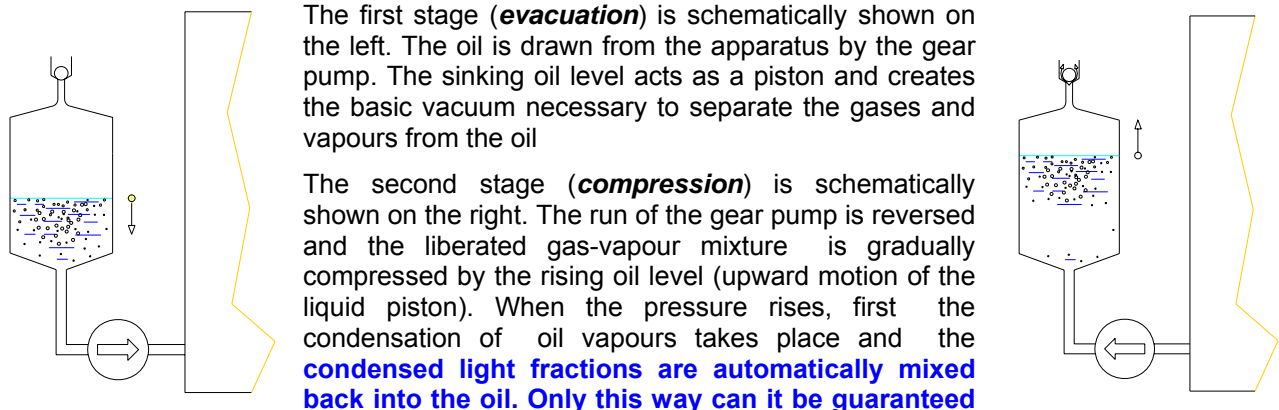
The effect of moisture on the transformer is summarized in Table 1.

Qp (weight % in paper)	Transformer condition
0.5	new or highly dried
2.0	acceptable condition
3.3	paper starts to deteriorate
4.5	flashover possible at 90C
7.0	flashover possible at 50C
8.0	who knows ?

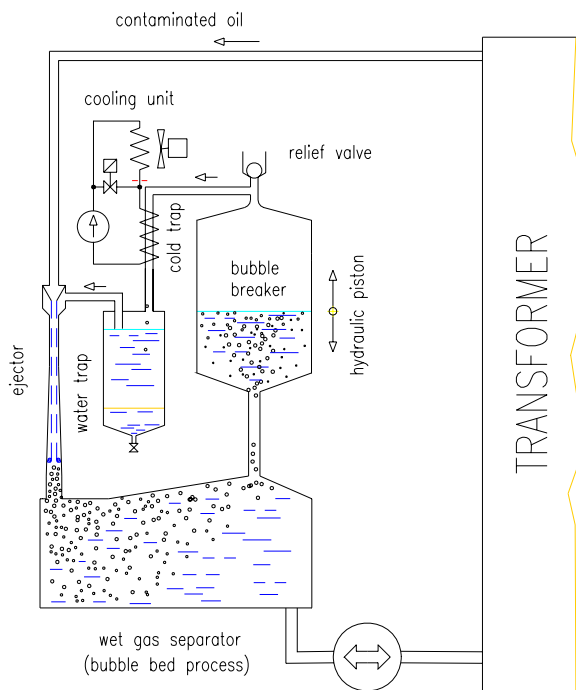
In order to avoid the deterioration of solid insulants, the moisture content should be kept under 2%. If the moisture level is suspected to exceed 2% , the transformer must be dehydrated as a matter of preventive maintenance. For basic information about moisture impact in the dielectric behaviour of a transformer See [www.ars-altmann.com](http://www.ars-altmann.com) / TRACONAL or / News.

## WHAT IS A LIQUID PISTON ?

The Liquid Piston principle, which substitutes the vacuum pump, is created by the rising and falling of oil level which is caused by the cyclic operation of the robust gear pump.



Subsequently, the gases are released via the non-return valve into the atmosphere. This process continues until the whole apparatus is filled with oil, then the gear pump is switched on into the direct run again and the next evacuation stage begins.



## HOW ARE VAPOURS AND GASES SEPARATED FROM OIL ?

Vacuum, appropriate temperature and large interfacial area are essential for efficient separation.

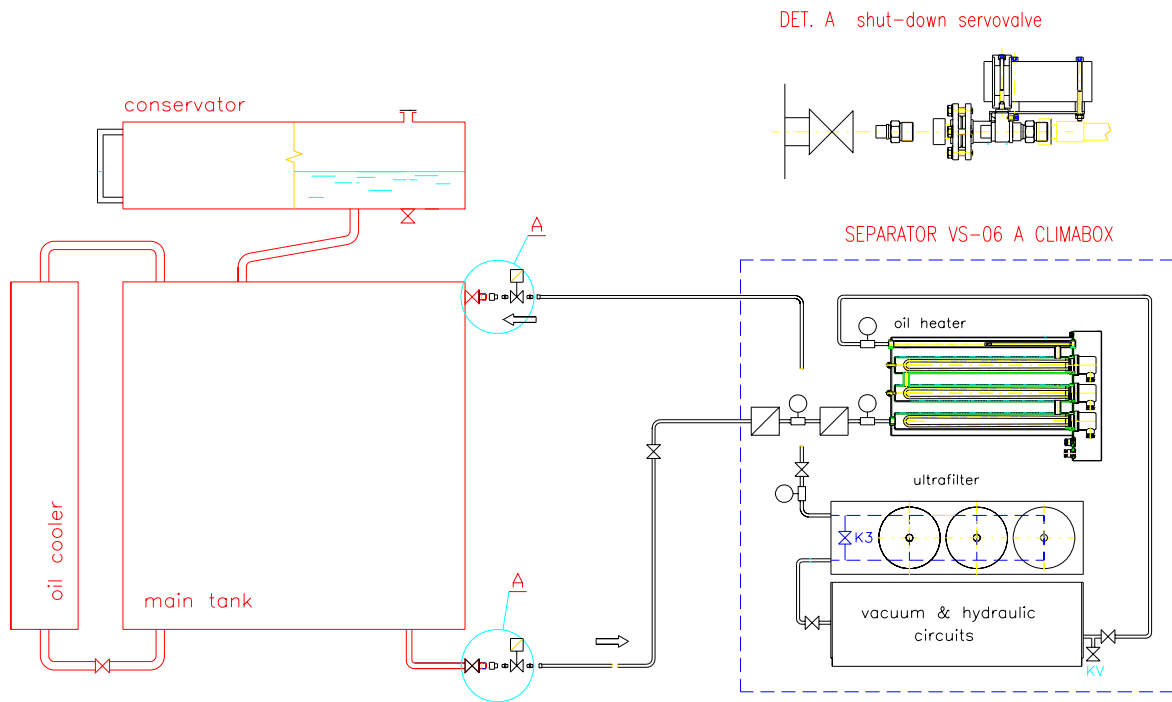
Contaminated oil from the transformer is adjusted to an optimum temperature and the hot oil and the gas (previously separated from the oil) are mixed in a vacuum by the ejector in order to produce bubbles with a large interfacial area (bubble bed).

The intense diffusion of the moisture from the oil is enhanced by minimizing the partial pressure of the water vapour. This is achieved by undercooling the carrier gas to condense and freeze-out all traces of moisture prior to mixing with the contaminated oil.

Dissolved gases and vapours diffuse into bubbles which are then agglomerated, collected and broken. The released water vapour is then collected in the form of ice in the freezing trap, and periodically defrosted and collected as a liquid in the water trap.

Note that only a simplified scheme is shown here for clarity.

## INSTALLATION

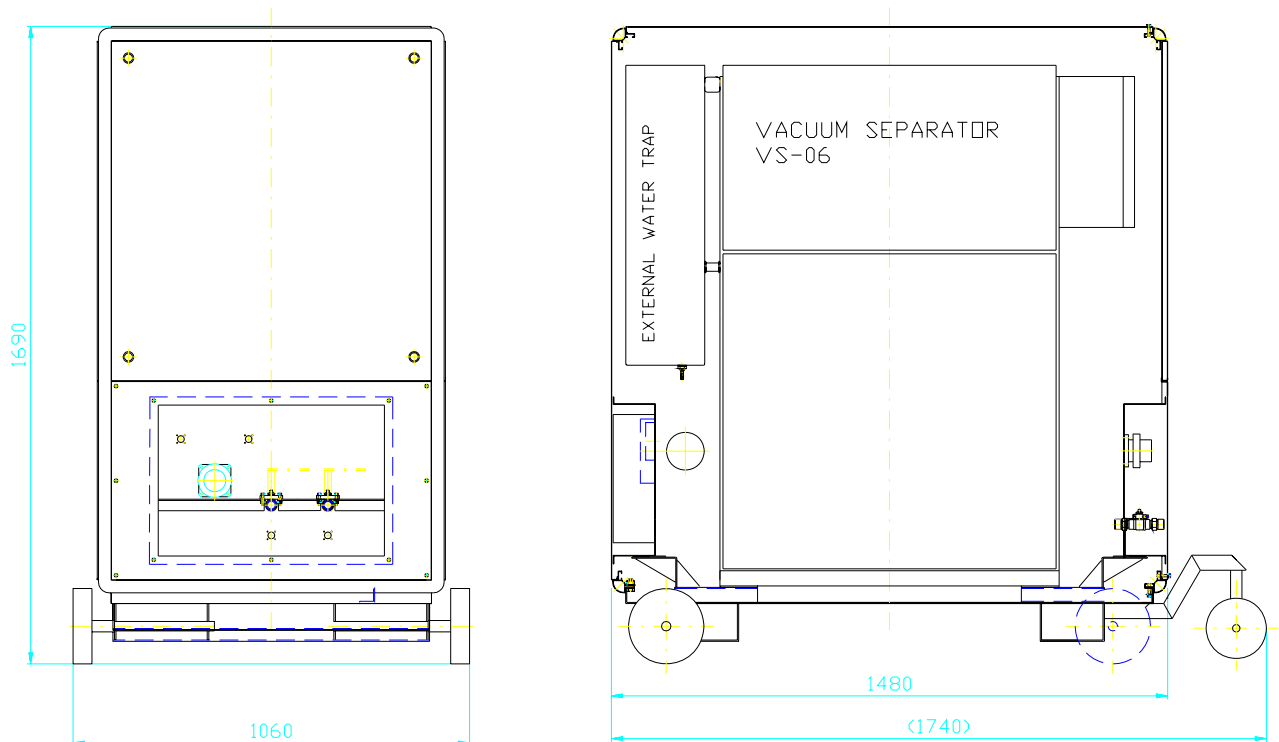


The separator can be connected to all types of transformers (i.e. open as well as sealed units). It should be located in close proximity to the transformer.

All treatment utilities (vacuum and hydraulic circuits, preheater, ultrafilter control circuits etc.) are installed in the moisture tight and internal air-conditioned CLIMABOX.

For detailed information See VS-06A CLIMABOX Operational Manual 2006

## CLIMABOX DIMENSIONS



## SPECIFICATION

Power supply voltage	220 - 550 V
Power supply frequency	60 Hz (or on request)
Power consumption:	
without oil heater	850 W
with oil heater PO-01	6200 W maximum
Oil throughput	10 m <sup>3</sup> per day maximum
Outlet water content	10 ppm nominal , 4 ppm minimum
Outlet gas content	1% nominal, 0.3 % minimum
Outlet filtering grade	1 µm

CLIMABOX : stainless steel, rust-proof box containing all necessary items :separator, heater, ultrafilter, external water trap, tool box, basic spare parts and one set of spare filters .

Dry weight ( without oil)	520 kg ( + autotransformer + aircondition, if requested)
Operating weight (oil filled)	580 kg
Hydraulical connection	2 x flexible 1/2" hose
Communication:	faxmodem, GSM modem, LAN link, <a href="#">SMS</a> , <a href="#">Internet</a>
Moisture reading :	Vaisala humidity sensor
Safety features :	spring-loaded servovalves activated by oil leak sensor, automatic shut-down in 20 seconds

## PARAMETRIC REMOTE CONTROL

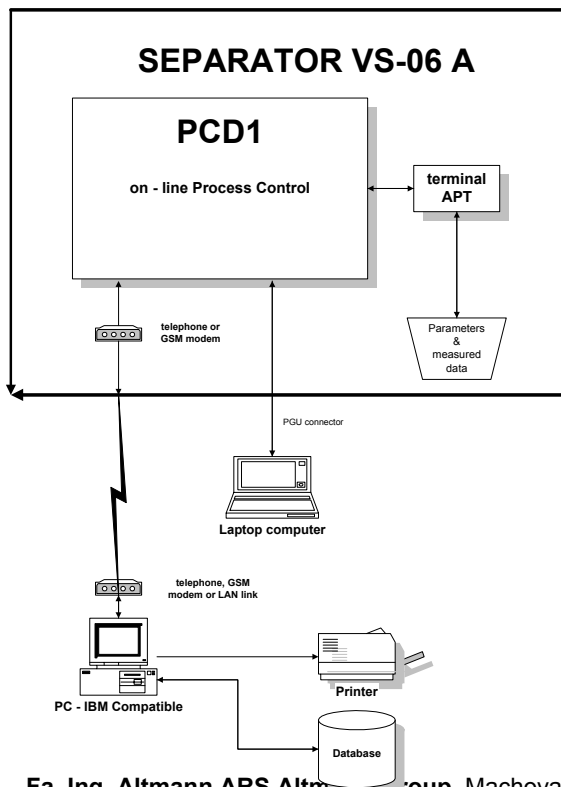
Regardless of how efficient any method of oil dehydration might be - the first law for the dehydration of transformers is :

**water removal from the cellulose materials of a transformer has to be safe and effective**

Any on-line transformer dehydration is ultimately governed by the slow diffusion of moisture from the cellulose into the oil and this process can be accelerated only by a significant increase in temperature. But, be careful!

**high transformer temperature → high water content in oil → high separation rate**  
which simultaneously means

→ **low dielectric strength of oil** → **low immediate reliability of transformer**



In order to avoid the lowering of the immediate reliability of the transformer, it is necessary to tune at least two antagonistic criteria in the whole process of dehydration

- max. separating efficiency of dehydrator (max. water removal rate)
- dielectric strength of oil - has to be maintained or improved

To achieve these targets the VS-06 can be programmed directly (manually) via the terminal of PCD or alternatively by the PC or lap-top.

**This way offers remote monitoring and optimization of dehydration by strictly controlling warming-up of the transformer.**

The figure on the left shows the structure of separator control systems and both connections between PCD1 and lap-top or remote PC.

The software for communication between the PCD1 and both computers - remote user PC and lap-top is provided by ARS.


## REMOTE SCREENING

For a better understanding of the long-term effects of dehydration by the VS-06 and the corresponding changes of the dielectric behaviour of the transformer two new communication /screening procedures are used:

- the **DDL** (**D**ehydration and **D**egassing **L**og)
- the **DSL** (**D**ielectric **S**trength **L**og)

Both procedures are started by clicking on the DDL or the DSL buttons in the Main window of the OPTIM D3L communication software which is installed in your PC or lap-top after the commissioning of the VS-06.

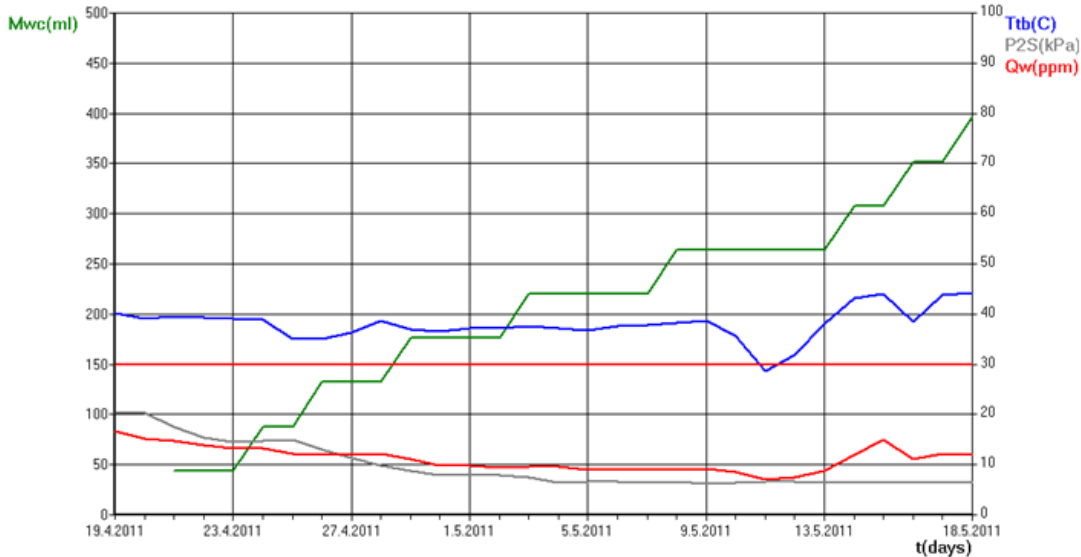
By clicking on the DDL the history of dehydration and degassing of the transformer is shown where all directly measured values are clearly defined in the form of a time-related diagram.

	<b>VACUUM SEPARATOR VS-06 - Main Data Log</b>
	<b>OPTIM D3L (Dehydration Degassing Dielectric Log)</b>
	<b>Procedure: DDL (Dehydration Degassing Log)</b>
	© Ing. Altmann, 2010

Transformer Location:	XXX
Transformer Serial Number:	XXX
VS-06 Serial Number:	XXX

Time-period of evaluation : 19.04.2011 - 18.05.2011

Norm requested value  $Q_{w,max}$  - red horizontal line  
 $Q_{w,max} = 30$  ppm... maximum allowed water content in oil



Mwc Amount of removed water (ml)  
 Qw Water Content in oil (ppm)  
 Ttb Transformer temperature bottom (C)  
 P2s Averaged vacuum in Separator (kPa)

**ATTENTION.**  
 Water content in oil  $Q_w$  exceeded  
 allowed  $Q_{w,max}$ -limit:

Day	$Q_w$ (ppm)

**Remarks & Recommendations**

Date of evaluation: 19.5.2011
-------------------------------

A new kind of assesment is used for on-line diagnostics and screening of dielectric behaviour of the transformer

**DSL – Dielectric Strength Log**

This absolutely new approach enables the DSL to calculate the theoretical (instantaneous, maximum attainable) value of the dielectric strength of oil (the  $U_{d,t}$ -value) on the basis of direct measuring of the water content in the oil (the  $Q_w$ -value).

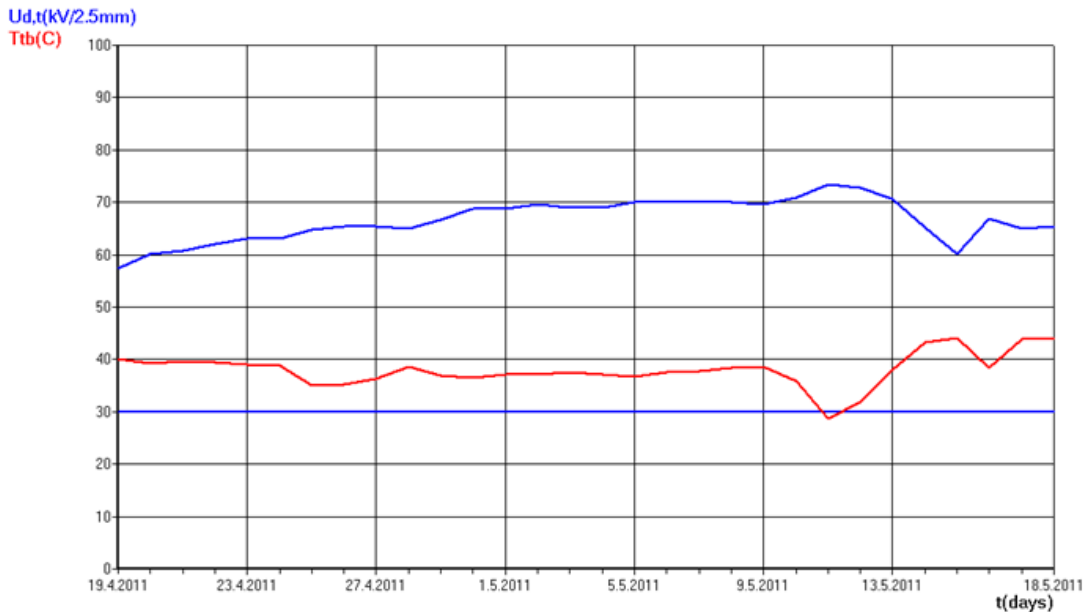
By clicking on the DSL button the change of the transformer temperature and the change of the dielectric strength of oil in a requested time-period is shown:

	<b>VACUUM SEPARATOR VS-06 - Main Data Log</b>
	<b>OPTIM D3L (D<sub>e</sub>hydration D<sub>e</sub>gasing D<sub>i</sub>electric Log)</b>
	<b>Procedure: DSL (D<sub>i</sub>electric S<sub>t</sub>rength Log)</b>
	© Ing. Altmann, 2010

Transformer Location:	XXX
Transformer Serial Number:	XXX
VS-06 Serial Number:	XXX

Time-period of evaluation : 19.04.2011 - 18.05.2011

Norm requested value Ud,min - blue horizontal line  
 Ud,min = 30 kV/2.5mm... minimal allowed dielectric strength in oil



Ud,t ... Theoretical Dielectric Strength of oil (kV/2.5mm)  
 Ttb ... Transformer temperature bottom (C)

Number of lab verifications: 1

**ATTENTION.**  
 Dielectric Strength of oil Ud,t decreased  
 under allowed Ud,min-limit:

Day	Ud,t(kV/2.5mm)

**Remarks & Recommendations**

Date of evaluation: 19.5.2011

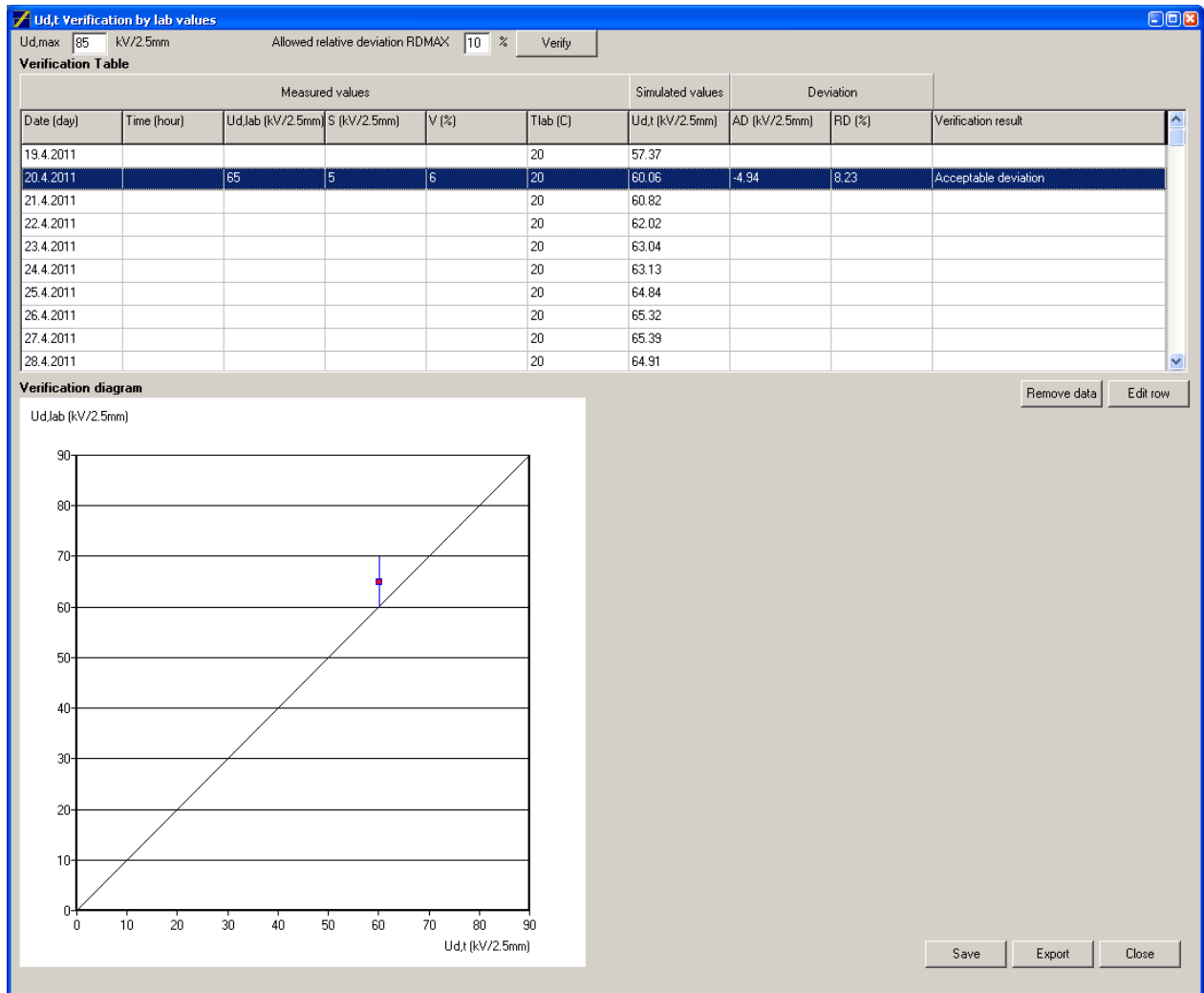
This mathematical model which is used for the calculation is based on the well documented near-linear relationship between the dielectric strenght (the Ud,t-value) and the relative humidity of oil (at lab temperature).

To obtain relevant diagnostic results, the accuracy of the Ud,t-simulation for the given time-period must always be correspondingly verified by the quantitative comparison of the Ud,t-value and the Ud,lab-value at the same time ( the time of oil sampling).

By clicking on the Verification button in the DSL window, the Verification Table and the Verification Diagram is shown.

At first the time(s) of sampling and the corresponding Ud-lab value(s) and other lab values have to be entered into the Verification Table:





Clicking on the button then gives the requested result(s), which is shown in the Verification Diagram in the bottom part of the window .

The Verification Diagram gives a direct and easy insight into the accuracy of on-line Ud,t-simulation and/or the Ud,lab-value :

- if the  $U_{d,lab} \approx U_{d,t}$ -point is situated in the 10kV/2.5mm band around the transverse 45° line, the consistency of the simulated Ud,t-value and the Ud,lab-value is very good and the subsequent diagnosis of the dielectric behaviour of the transformer for the given time-period is precise enough
- if the  $U_{d,lab} \approx U_{d,t}$ -point is situated in the 20kV/2.5mm band, the consistency of simulated Ud-value and measured Ud-value is sufficient (for field conditions) and the subsequent diagnosis is acceptable
- if the  $U_{d,lab} \approx U_{d,t}$ -point is situated outside of the 20kV/2.5 band, means that either the simulated Ud,t-value or the Ud,lab-reading is not precise enough. The relevant check of a dielectric behaviour of the transformer is not possible. Therefore the veracity of both values has to be checked.

The mutual comparison of simulated and directly measured Ud-values gives an opportunity to check the plausibility of both values and to validate the diagnostic / screening process as the whole.

## Typical applications of the VS-06 Climabox

**Indonesia:**

Installation of VS-06 Climabox at block transformer  
Improvement of Tx dielectric



**Germany: 250 MVA Transformer**



VS06 Climabox (and Online DGA)controlled life-extension of aged transformer

**Contacts**

**Fa. Ing. Altmann ARS Altmann Group**, Machova 142, 344 01 Domazlice, Czech Republic, European Union  
Tel:+420-379 738 778, Fax:+420-379 738 775, Cell phone:+420-602 362 157 email:altmann@iol.cz, [www.ars-altmann.com](http://www.ars-altmann.com);

**Producer:****ARS - ALTMANN RECOVERY SYSTEMS**

Machova 142, 344 01 Domazlice  
Czech Republic

tel.: + 420 379 788 391, + 420 379 738 778

fax.: + 420 379 738 775

handy: + 420 602 362 157

e-mail: [altmann@iol.cz](mailto:altmann@iol.cz)

[www.ars-altmann.com](http://www.ars-altmann.com)

**OUR PARTNERS****Fa. Andreas Henghuber**

ARS - Altmann Systems  
Eggenfeldener Str. 59 D –  
84326 Falkenberg  
Germany  
Tel. +49(0) 8727 7180  
Fax.. +49(0) 8727 96 9827  
mob: +49(0) 171 547 5391  
e-mail: [Ahenghuber@t-online.de](mailto:Ahenghuber@t-online.de)

**Boston Home Inc.  
Industrial Supply**

168 Apo St., Sta. Mesa Heights  
Quezon City, Philippines  
Tel +632 4123726  
Fax +632 4150130  
Responsible person: Bernard  
Tiongson

**MTC Power Technology Ltd.**

Kallipoleos and Ifigenias I,  
Office 501, Amaral 30  
Nicosia 1055, CYPRUS, EU  
Email: [sales@mtcpowertec.eu](mailto:sales@mtcpowertec.eu)  
Fax: +357 (22) 752009

**Haris Al Afaq LLC.**

P.O. Box No. 8141  
Dubai , U.A.E.  
Contact person :  
R.Chakravorty  
Tel No : 009714-2719624/625  
Fax No : 009714-2719285  
handy No : 0097150-5259448  
e-mail: [ranadhir@haris.com](mailto:ranadhir@haris.com)

**Wuhan HengCheng  
Eletricpower Tech. Co.Ltd.**

802 Room 5 Building  
Wuhan, Hubei 430074  
P.R.of China  
Responsible person: Yan Jie  
Tel.:+86-27-87496061  
Fax.:+86-27-59715145  
Handy:+86-13909241723  
Web site:www.hchco.cn  
E-mail:  
[hcqiye\\_wh\\_yj01@163.com.cn](mailto:hcqiye_wh_yj01@163.com.cn)

**VH Ingeniería**

Ing. Luiggi 719- Bahia Blanca  
Bahia Blanca – Buenos Aires  
CPA (B8000JUO)  
Argentina  
Contact person:  
Victor Vercellino  
tel.: 54-291-4525662  
handy: 54-291-154622310  
E-mail:  
[victor.vercellino@gmail.com](mailto:victor.vercellino@gmail.com)

**STEVO Electric BVBA**

Hamsesteenweg 22/6  
3971 Leopoldsburg Heppen  
Contact person: Stefaan  
VOLKAERT  
Tel.: +32 11 341001  
Fax.: +32 11 347977  
Mob.: +32475823954  
[Stefaan.volkaert@stevoelectric.be](mailto:Stefaan.volkaert@stevoelectric.be)  
[www.stevoelectric.be](http://www.stevoelectric.be)

**METRACO Energy Ltd**

38 Addington Street  
Ramsgate CT11 9JQ England  
Mülheimer Str. 1  
56220 Bassenheim Germany  
Tel: + 49 172 1966 077  
Germany  
Tel: + 33 6 07 53 47 36  
France  
skype: metracoenegy  
email: [bs@metraco-energy.com](mailto:bs@metraco-energy.com)

**CTR Manufacturing  
Industries Limited**

403B, Turf Estate, Shakti Mills  
Lane, Mahalaxmi (West)  
MUMBAI 400011,  
INDIA  
Contact person:  
Mr. D.S.Jain  
e-mail: [powerquality@ctr.in](mailto:powerquality@ctr.in)  
TEL : 91.22.24920454